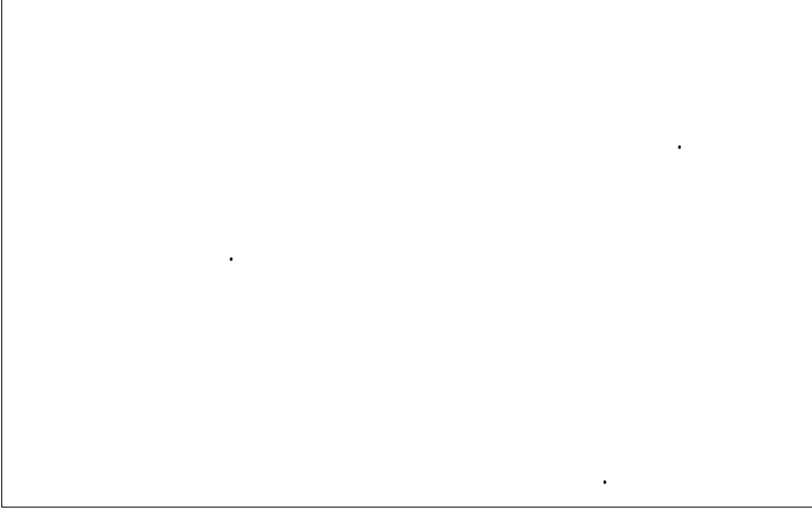


EUT

سامر مظهر قنطقجي /



موضوع البحث وأهميته

المبحث الأول - تنظيم الصيانة

()

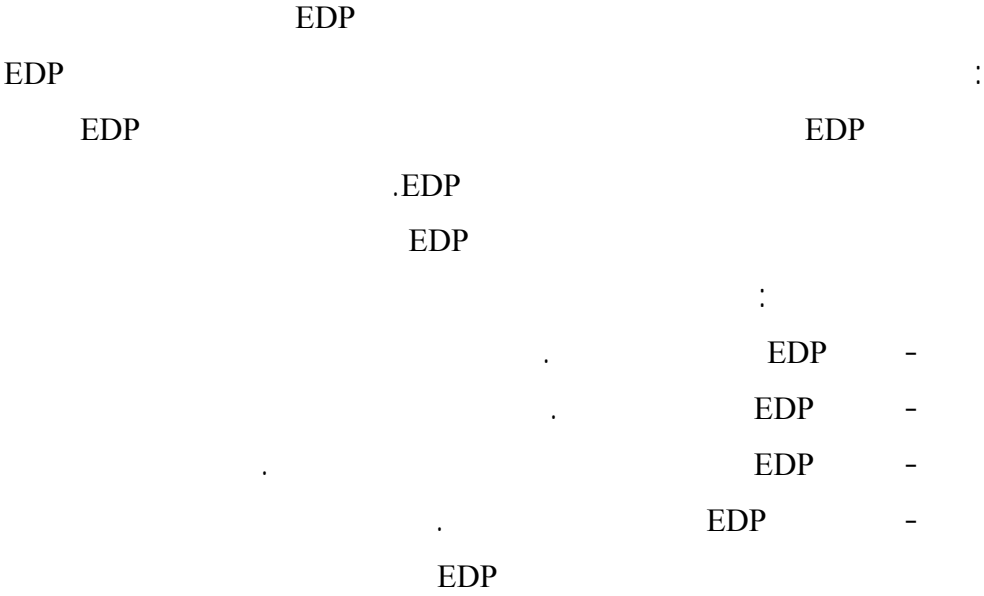
_____ - -

_____ : - -

()

(أ) الصيانة البدائية أو اليدوية:

(ب) معالجة البيانات إلكترونيا (EDP): Electronic Data Processing



¹ Svend Nielsen -1990- (THE MAINTENANCE ORGANIZATION) , F.L.Smith,DENMARK , PP.3

EDP

.EDP

EDP

()

()

()

()

()

()

()

المبحث الثاني - أنظمة الصيانة

EDP

○

○

○

○

○

-

-

-

¹ Jan H. Nielsen - 1991 - (IllustrayTion Of A Computerized Maintenance System Which May Be Designed To Operate At Various Functional Levels) -F.L.Smith,Denmark. PP. 36.

-
-
-
-
-

: - -

:

.

...

"

"

.EDP

.

EDP

()

: - -

:

.()

-

.()

-

.

:

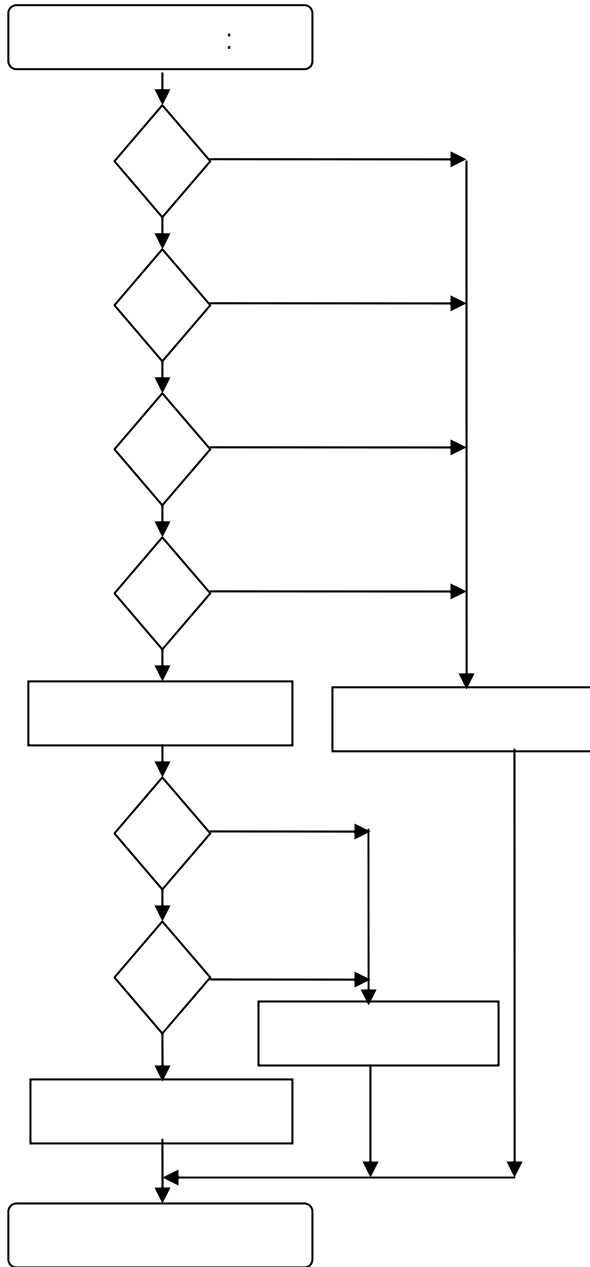
-
-
-
-
-

:

..

.

:(-)



(-)

:

:

--

:

--

:

-
-
-
-
-
-
-
-
-
-

¹ Nielsen S. - (Maintenance A Systemic Approach).
² Svend Nielsen - (The Maintenance Organization) , OP.CIT. , PP. 6.

%	
,	
,	/
,	
,	()
,	
,	

:

¹ (1) Oest, Flemming - 1991- (DEVELOPMENT OF ORGANIZATION STRUCTURE IN A CEMENT PLANT), F.L.Smith, DENMARK. PP. 9.

%	
,	
,	
,	
,	

:

-

-

-

-

- -

Use Based Maintenance

Failure Based Maintenance (FBM)

Condition Based Maintenance (CBM)

(UBM)

(أ) الصيانة بحسب العطل (FBM):

FBM

(ب) الصيانة بحسب الاستعمال (UBM):

(ج) الصيانة بحسب الحالة (CBM):

CBM

(ج) الصيانة بحسب الحالة (CBM):

¹ C.W.Gits -1988-(The Systemtic Desgin Of The Maintenance Concept For A Centrifugal Separator) - F.L.Smith, DENMARK., PP. 2-9.

CBM

CBM
:Tele-CBM

.Tele-Diagnosis

: - -

EDP

.EDP

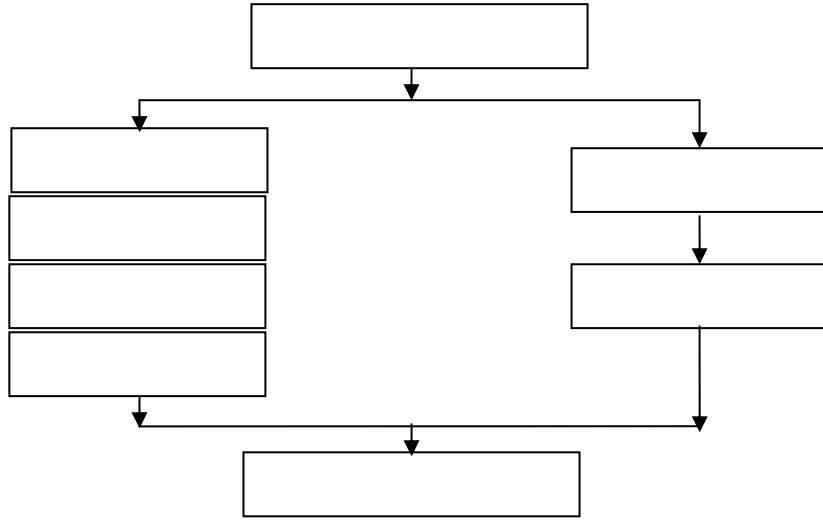
(/)

-
-
-

: - -

.EDP

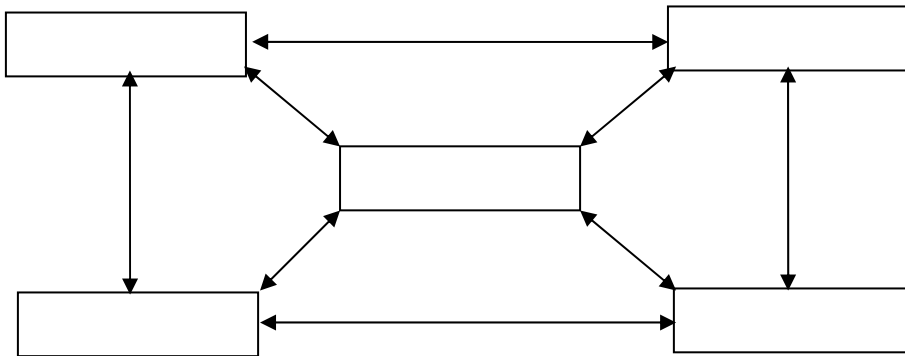
:(-)



(-)

()

:(-)



المبحث الثالث: التخطيط والمتابعة

-
-
-

%

MDT

MTBF :

$$A = \frac{MTBF}{MTBF + MDT}$$

.()

¹ Svend Nielsen - (THE MAINTENANCE ORGANIZATION), OP.CIT., PP. 19.

.(.(.(

نسبة الوقت الإضافي)
نسبة صيانة تعطل آلة)
نسبة انتظام العمل)

المبحث الرابع - أنظمة المعلومات

-
-
-
-
-
-
-

المبحث الخامس - الموارد البشرية

-
-
-
-
-
-
-
-
-
-
-
-

EDP

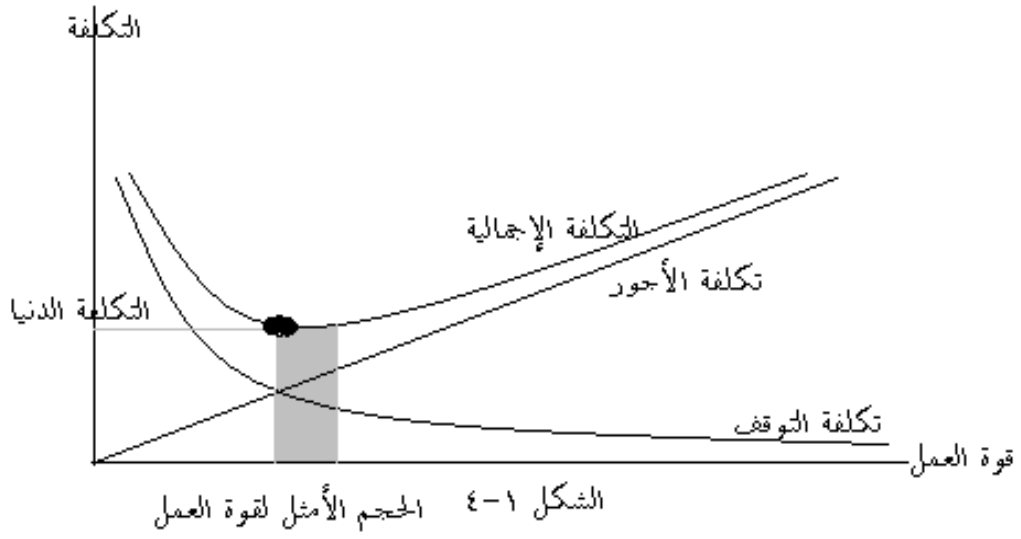
..

.Rule Of Thumb

:

X(0.1-0.2)=

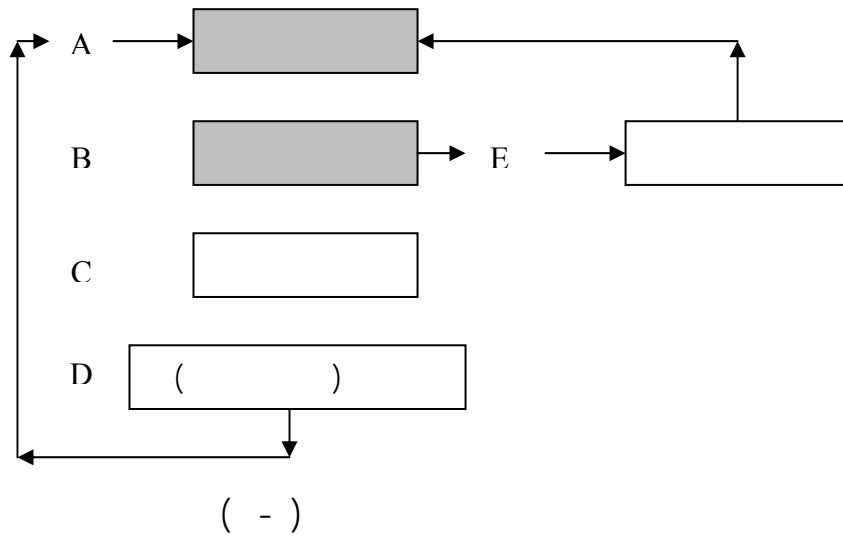
:(-)



المبحث السادس - الإعتبارات الاقتصادية

(-) :

¹ Svend Nielsen - (THE MAINTENANCE ORGANIZATION), OP.CIT., PP. 28.



A,B

:

:Ta A+B =

$$:To : \quad Av = \frac{To}{To + Ta}$$

.C+D+E =

(PortLand)

.%

:

-
-
-
-
-
-
-
-

:

-
-
-
-

: (-)



(-)

المبحث السابع - نموذج مقترح للصيانة

: - -

W.M.J.Geraerds

.Eindhoven University Of Technology¹

EUT

:

: _____ ()

: _____ ()

¹ N.M.J. Geraerds -(THE EUT MAINTENANCE MODEL), OP.CIT., PP. 18.

² IFRIM Report 90/6 April 1990, EUT.

3 يقصد بالمنظمة: المؤسسة التي تمتلك أنظمة تقنية ولديها طاقات صيانة.

: _____ ()

.Original Equipment Manufacturer (OEM)

: _____ ()

: _____ ()

: - -

(OEM)

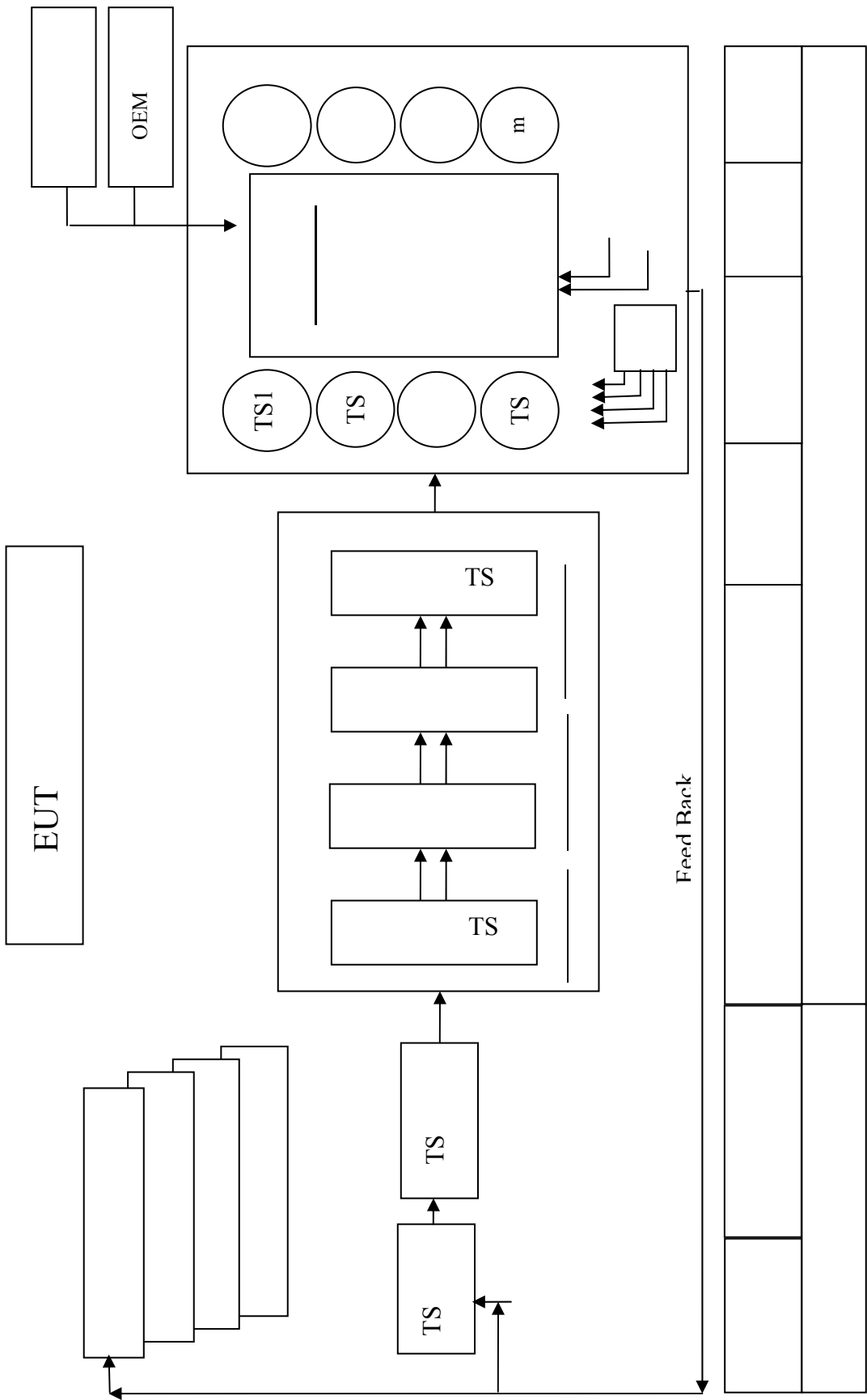
: (-)

:

: _____ ()

.n 1

i .n 1



(-)

: _____ ()

.1,2,.....,m

: _____ ()

:
:
:

)

(

.()

-
-
-
-

:(OEM) _____ ()

(OEM)

(OEM)

: _____ ()

:

-

-

-

.Universal Maintenance Standards (UMS)

: _____ ()

: ()

:

:

-

-

-

-

: ()

: ()

: ()

":

: ()

"

"

"

الخلاصة

}

{ CBM

Some Maintenance Management Basis And EUT Maintenance Model

Dr. Samer Kantakji / PhD of Accountancy

Summary

The purpose of this study is to improve the interest of higher management in the production companies maintenance division which represents a vital management and a peace gate to the production activity. It is a good tool to illustrate how to make a suitable model for the maintenance management.

This discussion aims at improving the maintenance team levels, which helps in reducing the increasing maintenance costs besides to their role in the process of production through managing their work in an ideal way.

Maintenance jobs were a secondary function in the companies. They meant repairing. Higher management dealt with these works as a sudden disease because of the unexpected extra costs.

But in the later years, studies and researchs which are looking for mathematical models and scientific ways to control these increasing costs.

So, the researcher focuses on **Maintenance Managing** by referring to the **maintenance organization** methods, by explaining the organization ways (Inner, External, Central, Non-Central organizations). This leads the management to adopt a method or more to organize the maintenance jobs, this management suits its financial and technical sources and its activity nature.

After that the management must use the organization techniques (manual, EDP, computerized) to get the best way to control its maintenance selected system to determine: What to do ? Where to do ? When to do ? Who must do ? How to do ?.

When the management gathers these rules in addition to: maintenance jobs planning, builds information systems, manages the human sources, and gets the economic considerations, it will get a suitable **maintenance model** belonging to its company activity. This model must illustrate the documents and the necessary papers which reflex the documentation cycle to explain the spare parts system and the used buying system.... etc. The main function of the model is to determine the limits of the mixture of repairing and planning maintenance. The researcher applied these concepts in **EUT Model** with some modifications.

References

- 1- C.W. Gits - 1988 - (THE SYSTEMATIC DESIGN OF THE MAINTENANCE CONCEPT FOR A CENTRIFUGAL SEPARATOR) - International Maintenance seminar - F.L.Smith - Denmark , 12Page.
- 2- C.W. Gits - 1990 - (DEVELOPMENT IN THE FUNDAMENTALS OF MAINTENANCE MANAGEMENT) - International Maintenance seminar - F.L.Smith - Denmark , 23Page.
- 3- Jan H. Nielsen - 1990 - (ILLUSTRATION OF A COMPUTERIZED MAINTENANCE SYSTEM WHICH MAY BE DESIGNED TO OPERATE AT VARIOUS FUNCTIONAL LEVELS) - International Maintenance seminar - F.L.Smith - Denmark , 46Page.
- 4- Svend Erik Nielsen - 1990 - (MAINTENANCE A SYSTEMATIC APPROACH) - International Maintenance seminar - F.L.Smith - Denmark , 12Page.
- 5- Svend Erik Nielsen - 1990 - (THE MAINTENANCE ORGANIZATION) - International Maintenance seminar - F.L.Smith - Denmark , 31Page.
- 6- W.M.J. Geraerds - 1990 - (THE EUT MAINTENANCE MODEL) - International Maintenance seminar - F.L.Smith - Denmark , 18Page.